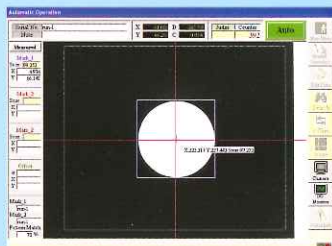


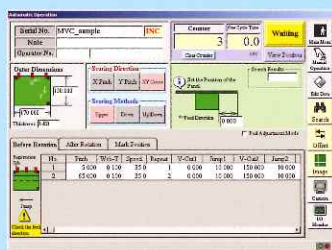
MVC-630C

OPTICAL V-SCORING SYSTEM

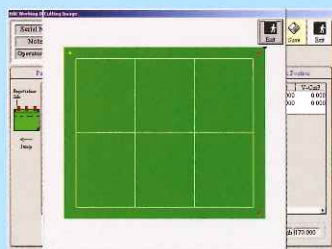
光学系统式V刻机



● Tooling Hole Image
对位孔的影像



● Auto Operation Display
自动操作显示



● Auto Operation Image
自动操作画面显示



FEATURES 特点

- Direct recognition of the marking or tooling holes leads to less deviations between V-score lines and the patterns of the panel.
- θ offset after measuring markings or tooling holes.
- Loader / Unloader
- X-Y Axis
- Jumping Score
- Stable accuracy for V-score Pitch & Web-thickness by clamping panel.
- Edge Reference (Option)
- 直接读取对位孔或对位靶点, 最大程度降低V槽与图形间的尺寸偏差
- 读取对位孔或对位靶点后以角度补偿
- 含自动投收板系统
- 可选装XY方向同时加工装置
- 跳刀加工
- 使用夹爪系统, 位置及残厚精度稳定

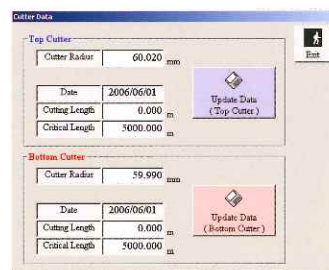
SPECIFICATIONS 规格

PANEL SIZE : Max. 630mm x 630mm
Min. 100mm x 100mm
Thickness (mm) 0.3~3.2t

SCORING AREA : Any locations except 5mm from each edge.

MACHINE DIMENSIONS (mm) : 2,700L x 2,213W x 1,618H (8.85' x 7.26' x 5.3')
(with Loader / Unloader)

NET WEIGHT : Approx. 2,500kg

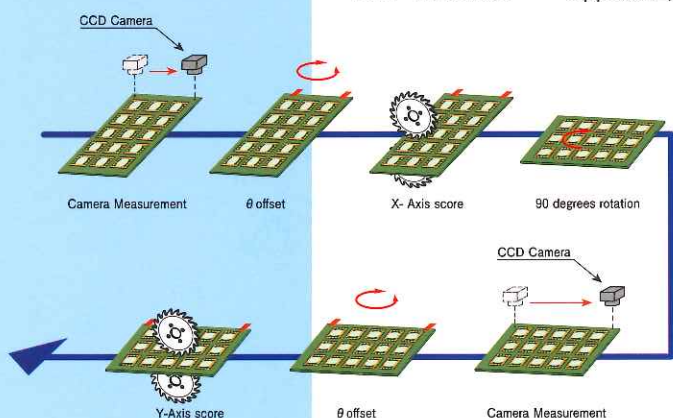


● Cutter Information Display
刀具信息显示

MVC-720C

OPTICAL V-SCORING SYSTEM

光学系统式V刻机



SPECIFICATIONS 规格

PANEL SIZE : Max. 720mm x 630mm
Min. 100mm x 100mm
Thickness (mm) 0.3~3.2t

ACCURACY: Pitch Accuracy ± 0.05 mm
Pitch Parallelism ± 0.05 mm
Web-thickness ± 0.05 mm
(By 1.6t unclad panel ; Depends on panel conditions.)

SCORING AREA: Any Location except 5mm from each edge.

MACHINE DIMENSIONS (mm) : 2,990L x 2,443W x 1,618H
(with Loader / Unloader)

NET WEIGHT: Approx. 2,650kg



● High Rigidity Frame

FEATURES 特点

- Manual loading.
- Area sensor for safety.
- Z-axis control by servo system.
- Clamp system for thin panels.
- 100 V-score lines in one Axis.

- 手动上板
- 区域传感器保障安全
- 使用伺服系统, 深度控制范围大
- 使用夹爪系统, 可应对薄板生产
- 单一方向可加工100刀

SPECIFICATIONS 规格

PANEL SIZE : Max.630mm x 630mm
Min. 150mm x 150mm
Thickness (mm) 0.3~3.2t

POSITION OF REGISTRATION PINS : 5~12 x 5~12mm (Fixed Pin)
5~12 x 140~620mm (Movable Pin)

DIAMETER OF REGISTRATION PINS : $\phi 3.00 \sim 5.00\text{mm}$ ($\phi 3.15\text{mm}$ as a Standard)

MACHINE DIMENSIONS (mm) : 2,300L x 1,895W x 1,618H (7.54' x 6.21' x 5.3')

NET WEIGHT : Approx.1900kg



MVP-630A

PIN REGISTRATION V-SCORING SYSTEM

钻基准式V刻机

FEATURES 特点

- Direct recognition of the marking or tooling holes leads less deviations between V-score lines and the patterns of the panel.
- θ offset after measuring markings or tooling holes.
- Edge Reference is available (Max. 6 panels can be loaded in 1 cycle).
- Without Loader/Rotation/Unloader and PC rack, floor space can be saved.
- High accurate jump score.
- Clamp the panel for stable pitch and web-thickness accuracy.
- V-scoring on Multi-pattern panels (before routing/punching) enables to produce various shapes of boards.
- High-speed process of metal base PCB (aluminum, copper, etc.) is available.

NEW

SPECIFICATIONS 规格

PANEL SIZE: Max.630mm x 630mm Min.100mm x 100mm
(Marks/Holes to the edge should be less than 10mm)
Thickness (mm) 0.3~3.2t

MACHINE DIMENSIONS (mm) : 2,350W x 2,213L x 1,618H (7.72' x 7.27' x 5.3')

NET WEIGHT: Approx.2,000kg



MVC-630M

OPTICAL V-SCORING SYSTEM

光学系统式V刻机

FEATURES 特点

- Loader / Unloader
- X-Y Axis
- Jumping Score
- Multiple Loading (Max.6 pcs.)
- Edge Reference

SPECIFICATIONS 规格

BOARD SIZE: Max.630mm x 630mm (410mm x 410mm with rotation)
Min. 40mm x 40mm (70mm x 70mm with rotation)
Thickness (mm) 0.3~3.2t

SCORING AREA: Any location except 3mm from each edge.

MACHINE DIMENSIONS (mm) : 2,700W x 1,860L x 2,060H (8.86' x 6.1' x 6.76')
(with Loader / Unloader)

NET WEIGHT: Approx. 2,400kg

MVD-600A

AUTO MULTI V-SCORING SYSTEM

靠边基准式V刻机

COMMON SPECIFICATIONS for MVC / MVP / MVD

ACCURACY: Pitch $\pm 0.03\text{mm}$
(EXCEPT MVC-720C) Pitch Parallelism $\pm 0.03\text{mm}$
Web-thickness $\pm 0.03\text{mm}$
(By 1.6t unclad panel ; Depends on panel conditions.)

SPEED: Max.40m/min.

JUMP SCORE: Max.10 Times